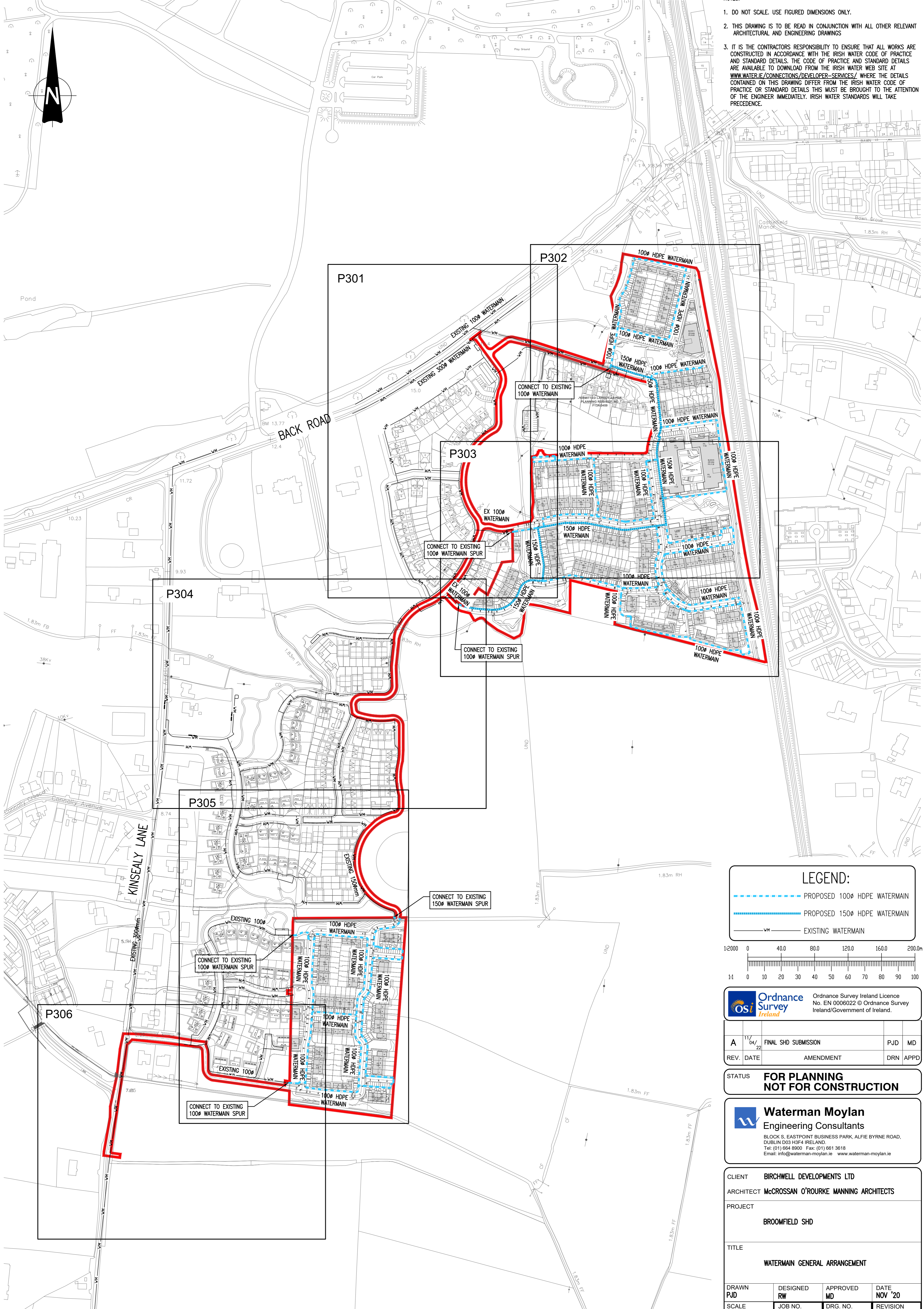


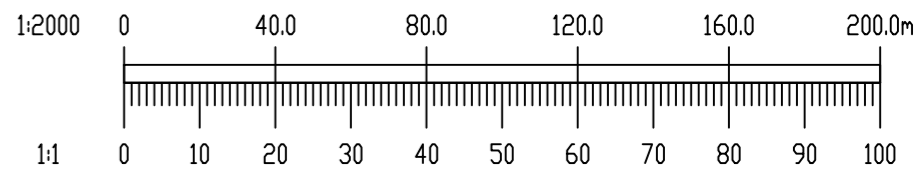
NOTES:

1. DO NOT SCALE. USE FIGURED DIMENSIONS ONLY.
2. THIS DRAWING IS TO BE READ IN CONJUNCTION WITH ALL OTHER RELEVANT ARCHITECTURAL AND ENGINEERING DRAWINGS
3. IT IS THE CONTRACTORS RESPONSIBILITY TO ENSURE THAT ALL WORKS ARE CONSTRUCTED IN ACCORDANCE WITH THE IRISH WATER CODE OF PRACTICE AND STANDARD DETAILS. THE CODE OF PRACTICE AND STANDARD DETAILS ARE AVAILABLE TO DOWNLOAD FROM THE IRISH WATER WEB SITE AT WWW.WATER.IE/CONNECTIONS/DEVELOPER-SERVICES/ WHERE THE DETAILS CONTAINED ON THIS DRAWING DIFFER FROM THE IRISH WATER CODE OF PRACTICE OR STANDARD DETAILS THIS MUST BE BROUGHT TO THE ATTENTION OF THE ENGINEER IMMEDIATELY. IRISH WATER STANDARDS WILL TAKE PRECEDENCE.



LEGEND:

- PROPOSED 100mm HDPE WATERMAIN
- PROPOSED 150mm HDPE WATERMAIN
- EXISTING WATERMAIN



Ordnance Survey Ireland Ordnance Survey Ireland Licence No. EN 0006022 © Ordnance Survey Ireland/Government of Ireland.

A	11/04/22	FINAL SHD SUBMISSION	PJD	MD
REV.	DATE	AMENDMENT	DRN	APPD

STATUS FOR PLANNING NOT FOR CONSTRUCTION

Waterman Moylan Engineering Consultants
 BLOCK 5, EASTPOINT BUSINESS PARK, ALFIE BYRNE ROAD, DUBLIN D03 H3F4 IRELAND.
 Tel: (01) 664 8900 Fax: (01) 661 3618
 Email: info@waterman-moylan.ie www.waterman-moylan.ie

CLIENT	BIRCHWELL DEVELOPMENTS LTD
ARCHITECT	MCCROSSAN O'ROURKE MANNING ARCHITECTS
PROJECT	BROOMFIELD SHD
TITLE	WATERMAIN GENERAL ARRANGEMENT

DRAWN	DESIGNED	APPROVED	DATE
PJD	RW	MD	NOV '20
SCALE	JOB NO.	DRG. NO.	REVISION
1:2000 @ A1	18-091	P300	A